

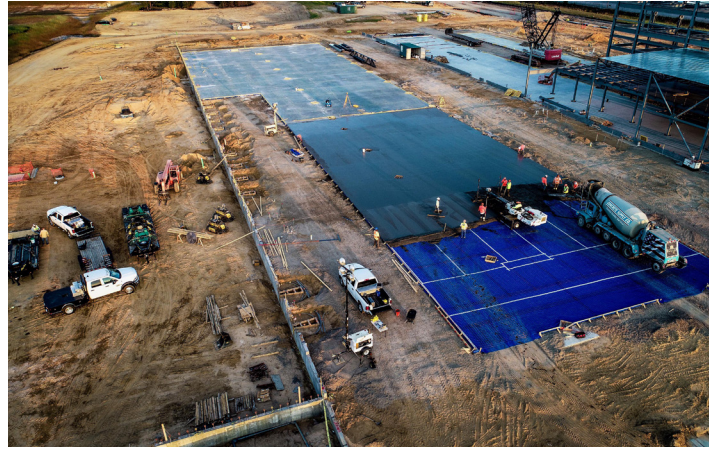
The **S-15R Laser Screed®** model is a high-performance, sophisticated machine with great value. It has a patented fully integrated self-leveling head assembly which plows, levels, and consolidates in just a single automated pass. The plow rakes down high concrete filling in low spots and the Somero® Quick Pass feature rakes down excessively high concrete without manual intervention. The hydraulically driven auger cuts the surface to grade and displaces excess concrete to the side via a double flight auger and the offset head design.

Our 20' / 6 m telescopic boom reaches out over the concrete allowing the operator to reach over chaired rebar and chaired mesh. Columns, pipes, box outs are no problem due to the ability to rotate around these obstacles while screeding. The powerful hydraulic system controls the elevation of the auger to maintain grade for a much smoother surface as compared to rigid mounting style machines, even with very low slump concrete! The S-15R can be easily transported on a flatbed truck or tag-behind trailer.

**Contact us today at Sales@Somero.com / 1-239-210-6519
or visit www.SOMERO.COM to learn more!**

FEATURES/BENEFITS:

- > Improved floor quality
- > Increased Profitability
- > Somero® Quick GradeSet System™
- > OASIS Laser Control System
- > Column-Block Protection
- > 360° Machine Rotation
- > LCD display screen with built in diagnostics
- > 4-Wheel, 2-Wheel, and Crab Steering



SPECIFICATIONS:

WEIGHT (Nominal)	9,375 lbs / 4,252 kg (with 10' / 3.0 m Screed Head)
WIDTH	6'6" / 2.0 m
HEIGHT	7' / 2.13 m
LENGTH	24'4" / 7.4 m (transport mode)
ENGINE (STANDARD)	49.6 HP (37 kW) Kubota D1803 Turbo Diesel
BOOM LENGTH	20' (6.0 m)
SCREED HEAD WIDTH STANDARD OPTIONAL	11'6" / 3.51 m (Without Sonic Tracer) 8' / 2.4 m
VIBRATOR WIDTH	10' / 3.05 m



**Engine options & requirements vary based on location. Contact Sales for more information.*

OPTIONS:

- Lifting Sling
- Spare Tire/ Wheel
- Column Clamp
- Tripod
- Head Transport Stands
- S-15R Silver Kit
- S-15R Gold Kit
- Spray Bar