



**Phone:** 604-539-2137  
**Toll Free:** 1-866-539-4244  
**Fax:** 604-539-2176  
**Email:** info@kcppumps.ca  
**#201-5769 Production Way**  
**Langley BC V3A 4N5**



## BOOM SPECIFICATIONS

Vertical reach	45.1 M	(148' 1")
Horizontal reach	41.2 M	(135' 3")
Reach from front of truck	38 M	(124' 9")
Unfolding height	8.6 M	(28' 3")
Section articulation	92° / 180° / 225° / 180° / 210°	
Rotation	370°	
Delivery line	125mm	(5")
Proportional boom	Yes	
End hose length	3.5 M	(11' 6")
Outrigger spread-front	7.4 M	(24' 4")
Outrigger spread-rear	9.68 M	(31' 9")
Max. outrigger weight	28,000 kg	(61730 lbs)

## PUMP SPECIFICATIONS

Maximum output	170 m <sup>3</sup> /h	(222 yd <sup>3</sup> /h)
Concrete cylinder	Ø230 x 2100mm (9" x 83")	
Stroke per minute	32	
Concrete pressure	95 bar	(1378 psi)
Hopper capacity	0.6 m <sup>3</sup>	(21 ft <sup>3</sup> )
S-tube	Ø230 x Ø180 (9" x 7") Big Mouth	
Hydraulic pump	Rexroth AI20VL0190	
Cycling system	Hydraulic with manual overrides	
Max aggregate size	40 mm	(1 1/2")
Water Tank Volume	600L	158.5Gal

\* Maximum theoretical values listed.

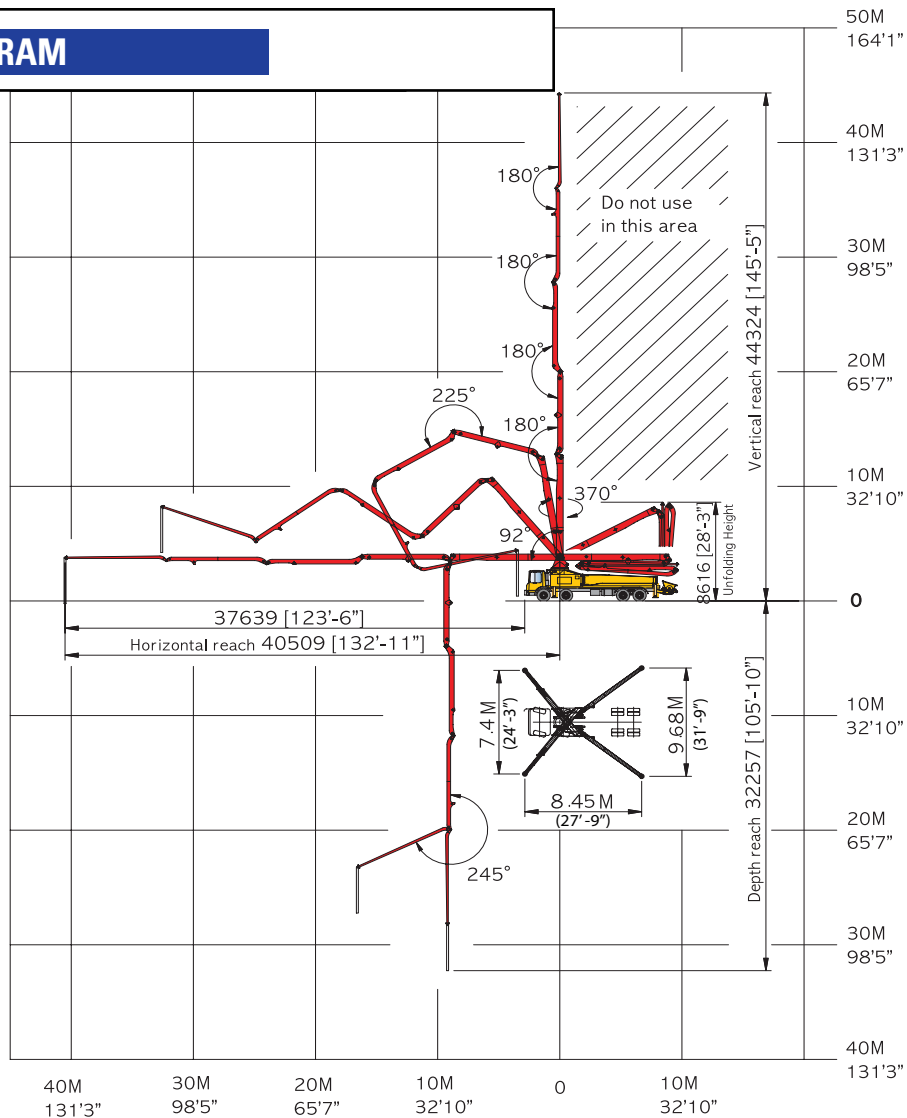
\*Dimension will vary with different truck makes, models and specifications.

\*Right to make technical amendments reserved.

## TRUCK MOUNTED SPECIFICATIONS

Available: MR MACK, GRANITE MACK, PETERBILT, INTERNATIONAL, FREIGHTLINER.

## WORKING DIAGRAM



## WEIGHT DIAGRAMS

\*Photos and drawings are for illustrative purpose only.  
 \*Dimension will vary with different truck makers, models and specifications.  
 \*Right to make technical amendments reserved.

