

## KVM 55

Custom carrier mounted concrete pump  
with 4-section placing boom



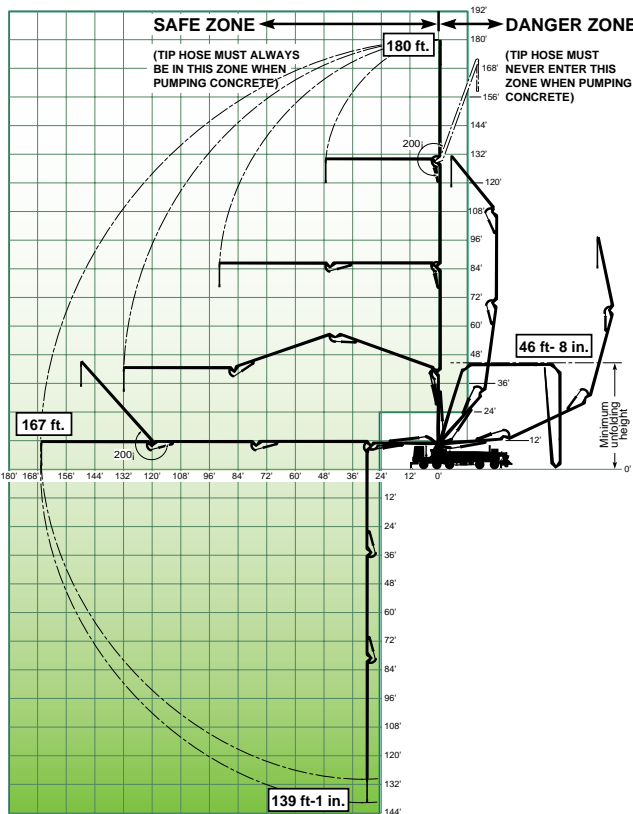
When long boom performance is the criteria, no pump fits the bill better than the 55-meter. Extraordinary reach of 167 feet horizontally and 180 vertically means this pump performs on so many tasks including slabs, medium rise buildings, large volume commercial and industrial projects. Most impressive is the maneuverability of the longest

boom in the Schwing line-up. Choose from a variety of carriers to transport this profitmaker to several jobs per day. Fast acting outriggers and convenient controls allows set-up in less than 10 minutes.

The full range of Generation III pump kits can be ordered with your 55 to match output of up to 213

cubic yards per hour to the project. And with all-hydraulic operation, multiple port shifting and the legendary Rock Valve you can pump flat-out at maximum boom reach quietly, smoothly and continuously. Order the optional extended housing E-Rock to gulp the harshest mixes as fast as you can feed the machine.

The market for long booms continues to grow beyond expectations. Be the leader in your market by adding a 55 to your fleet.



### Pump Kits on 55

	2023-4	2023-5	2525-5	2525H-6
Theor. Concrete Output (cu./yds/hr)	170	208	181	213
Max. Pressure on Concrete (psi)	1007	1007	1169	1169
Max. Strokes/Min.	26	32	18	22
Pump Cylinder Diameter (in.)	9	9	10	10
Pump Cylinder Stroke Length (in.)	79	79	98	98
Differential Cylinder Size (in.)	5.1	5.1	4.7	4.7
Max. Aggregate Size (in.)	2.5	2.5	2.5	2.5
Max. Hydraulic System Pressure (psi)	5075	5075	5075	5075

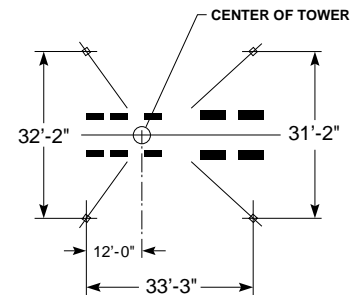
Specifications are subject to change without prior notice.

### Boom Specifications

	U.S.	Metric
Pipeline Diameter	4.4"	112 mm
Vertical Reach	181'	55 m
Reach from Slewing Axis	167'	51 m
Net Horizontal Reach	151'	46 m
Unfolding Height	46'-8"	14.2 m
Section Length	First Section: 30'-2"	9.2 m
	Second Section: 44'-5"	13.5 m
	Third Section: 45'-2"	13.8 m
	Fourth Section: 47'-3"	14.4 m
Slewing Range	400°	400°
4.4" End hose length (coupled at one end only)	9'	2.74 m

Specifications are subject to change without prior notice.

### KVM 55 Outrigger Spread



# SCHWING

5900 Centerville Road  
St. Paul, MN 55127  
Tel 651-429-0999  
Fax 651-429-3464  
www.schwing.com

