

42X-Meter Truck-Mounted Concrete Boom Pump



- **137 ft Vertical Reach**
- **Special Telescopic Diagonal X-Outrigger Design for Quick Setup**
- **Fully Integrated Boom Pedestal**
- **High Volume Outputs and High Pressures**
- **Free Flow Hydraulics**

Boom The Putzmeister 42X-Meter truck-mounted concrete boom pump features a compact telescopic diagonal X-outrigger design for quicker and easier setup in the tightest of areas. Plus, this highly versatile 4-section roll-and-fold boom is mounted on a four-axle chassis for enhanced maneuverability.

Delivery Line The boom is equipped with a 5 in. induction hardened delivery line mounted in easy lift-out brackets for simple delivery line replacement. Standardized elbows and straight pipe sections are used for common component availability and easy replacement.

Pedestal The fully integrated pedestal design of the Putzmeister 42X absorbs all boom forces as outriggers and boom are within one structural element. This design results in less twist, reduced forces transferred to the truck frame, a small outrigger footprint, low overall weight and quick setup. The boom pedestal includes a rotation bearing and access openings to simplify changing the turret pipe. It also incorporates a hydraulic oil tank for improved weight distribution. Triple suction filters with indicator gauges are located in the pedestal for easy access and a condensation trap is found in the tank to collect water. Two spacious 15 ft. 5 in. (4.7m) long decks allow convenient storage of pipe and hoses.

Outriggers Compact in width, the fully hydraulic front double-acting outriggers telescope diagonally while the rear ones swing out. Four nylon outrigger pads are included in the two side compartments on each unit. For enhanced job site versatility, the 42X is equipped with Putzmeister's One-Sided Support (OSS) system. This unique feature allows the operator to reduce the outrigger extension on one side of the unit to create a smaller overall machine footprint. Utilizing a series of sensors, the system enables the unit to maintain a defined and safe working envelope on space-restrictive sites that demand a larger boom.

Radio Remote Controls Fully proportional frequency hopping HBC radio remote controls are standard for smooth and precise positioning of the boom. Additionally, the unit comes with a fully proportional backup cable remote box with 130 ft. (40m) cable for all boom and pump functions.

Clean Out A 406 psi (28 bar) hydraulically-driven water pump with a 185 gallons (700L) water supply make clean out easy.

Concrete Pump With the same equipment, only Putzmeister has the technology to offer both 260 yd³/hr output and provide 1233 psi concrete pressure with its .20H pump on the piston side (or 210 yd³/hr output and 1233 psi with its .16H pump - rod side). With competitive designs, you have to decide if you want the equipment for either high pressure or high volume. Key features include a free flow hydraulic system for smooth controllable pumping as well as hard-chromed concrete cylinders and automatic lubrication of the concrete pistons for long service life. This pump has a fully adjustable volume control which allows very slow pumping while retaining full concrete pressure and boom speed.

S-Valve Ideal for high pressure applications, our hard-faced "Big Mouth" S-Valve with gradual 9 in. to 7 in. (230 to 180mm) reduction is designed



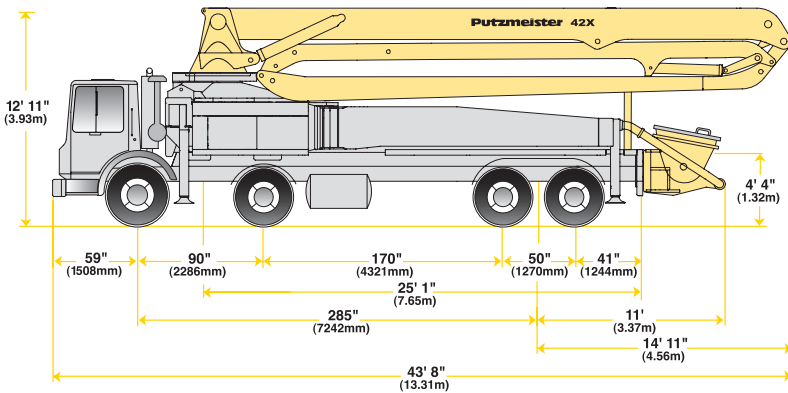
Available Spring 2006.

to handle extremely harsh concrete mixes. A thick-walled valve construction, exclusive Putzmeister hard-chromed concrete cylinders and a multi-piece piston cup design all add up to longer pump performance.

Hopper Putzmeister's EZ Clean Out RS 907L hopper combines an impact resistant solid polyurethane component with a steel base for a durable, yet lightweight design. Engineered for performance and easy maintenance, the RS 907L incorporates modularity that allows quick access to the S-Valve and shift cylinders. Hard-faced remixer paddles and a vibrator complement the hopper's large 19.4 cu. ft. (550L) capacity. A specially-designed hinged splash guard protects the unit from splattering during pumping and conveniently folds down and latches to cover the hopper during transit. In addition, our low hopper height facilitates easy discharge from mixer trucks.

Specifications

42X-Meter Concrete Pump



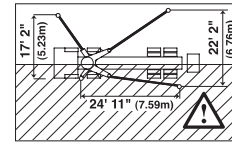
Truck-Mounted Specifications

Based on Model Mack MR 688S with .16H pump cell.

Length	43' 8"	(13.31m)
Width	8' 2"	(2.50m)
Height	12' 11"	(3.93m)
Wheelbase	285"	(7242mm)
Front axle weight	35,915 lbs	(16,305kg)
Rear axle weight	39,675 lbs	(18,012kg)
Approx total weight	75,590 lbs	(34,318kg)

Weights are approximate and include pump, boom, truck, full hydraulic oil, driver and full fuel. Varies with options selected.

Dimensions will vary with different truck makes, models and specifications.



With One-Sided Support (OSS)

Boom Specifications • Roll-and-Fold Design

Height & Reach

Vertical reach	136' 10"	(41.70m)
Horizontal reach	124' 8"	(38.00m)
Reach from front of truck* (net reach)	115' 9"	(35.30m)
Reach depth	92' 9"	(28.29m)
Unfolding height	32' 6"	(9.90m)

4-Section Boom

1st section articulation	99°
2nd section articulation	180°
3rd section articulation	180°
4th section articulation	255°
1st section length	33' 4" (10.16m)
2nd section length	30' 10" (9.40m)
3rd section length	30' 2" (9.19m)
4th section length	30' 4" (9.25m)

General Specs

Pipeline size (ID) metric ends	5"	(125mm)
with couplings	5.5"	(140mm)
Rotation	365°	
End hose-length (heavy-duty)	10'	(3m)
End hose-diameter	5"	(125mm)
Outrigger spread L-R-front telescopic diagonal	26' 1"	(7.95m)
Outrigger spread L-R-rear swing-out	29' 6"	(9.00m)

Pump Specifications

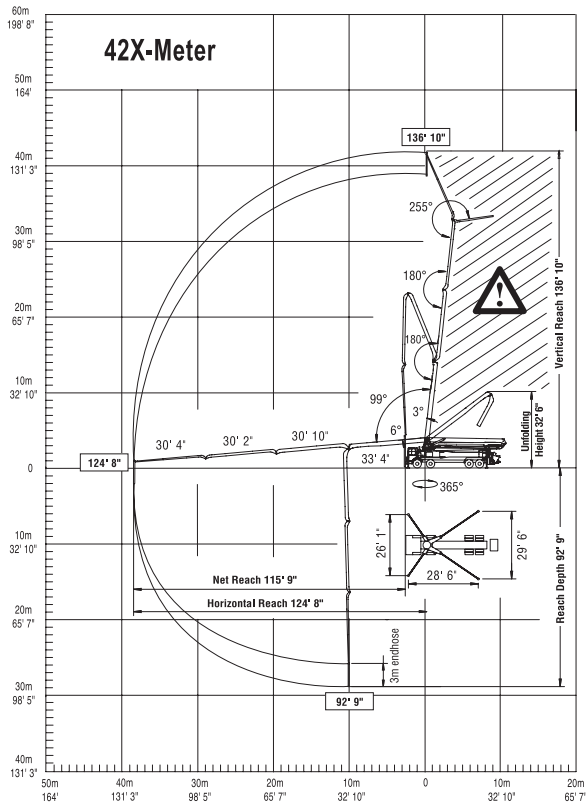
	42X.16H		42X.20H	
Output- rod side	210 yd ³ /hr	(160m ³ /hr)	—	—
piston side	146 yd ³ /hr	(112m ³ /hr)	260 yd ³ /hr	(200m ³ /hr)
Pressure- rod side	1233 psi	(85 bar)	—	—
piston side	1885 psi*	(130 bar)*	1233 psi	(85 bar)
Concrete cylinder diameter	9"	(230mm)	11"	(280mm)
Stroke length	83"	(2100mm)	83"	(2100mm)
Max strokes per minute-				
rod side	31	—	—	—
piston side	21	—	26	—
Volume control	0-Full	—	0-Full	—
Vibrator	Standard	—	Standard	—
Hard chromed concrete cylinders	Standard	—	Standard	—
Hydraulic system	Free Flow	—	Free Flow	—
Hydraulic system pressure	5075 psi	(350 bar)	5075 psi	(350 bar)
Differential cylinder diameter	5.5"	(140mm)	5.5"	(140mm)
Rod diameter	3.1"	(80mm)	3.1"	(80mm)
Maximum size aggregate	2.5"	(63mm)	2.5"	(63mm)
Water tank - pedestal	40 gal	(150L)	40 gal	(150L)
- outrigger	145 gal	(550L)	145 gal	(550L)

Maximum theoretical values listed.

* Applies to units mounted on PMA stock truck-Mack MR 688S

• Standard delivery line system rated at max line pressure of 1233 psi (85 bar)

Right to make technical amendments reserved.



End hose not to be operated in caution area.



Putzmeister America
1733 90th Street
Sturtevant
Wisconsin 53177 USA

Telephone (262) 886-3200
(800) 884-7210
Facsimile (262) 884-6338
www.putzmeister.com